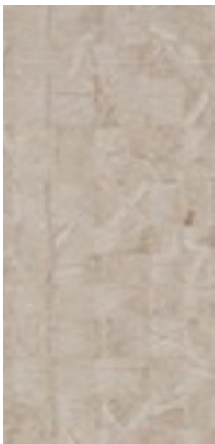


WHITE



KOTAMI

Italian Porcelain

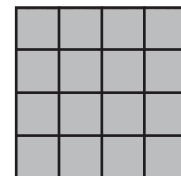
12x24, 24x24, 24x24 Deco, Intreccio Mosaic,
Listelli Mosaic, Bullnose

TILE

AMERICA

SHADE VARIATION

V1 - Uniform Appearance
Differences among pieces from the same production run are minimal.



BEIGE



WEAR CODE

Brown: Class 3 Residential Applications. Suitable for all residential applications.
Beige/Sand: Class 4 All Residential and Light Commercial Applications.
Class 4 tiles may be used in all residential areas and light commercial applications.
White: Class 5 Suitable for all Residential and Commercial Application.
Class 5 tiles are suitable for all applications including those with heavy traffic and constant use.

PERFORMANCE DATA

THICKNESS: 9.5 mm

Characteristics:	Norms:	Results
Water Absorption	ISO 10545-3	≤ 0.1 %
Abrasion Resistance	ISO 10545-7	3 / 4 / 5
Breaking Strength	ISO 10545-4	≥ 35 N/mm ²
Dynamic Coefficient of Friction	AcuTest	≥ 0.42
Frost Resistance	ISO 10545-12	Frost Proof
Chemical Resistance - Household Chemicals	ISO 10545-13	A/LA/HA
Thermal Shock Resistance	ISO 10545-9	Resists
Resistance to Stains	ISO 10545-14	Class 5
Crazing Resistance of Glazed Tiles	ISO 10545-11	Resists

Notes:

It is not recommended to stagger any tile longer than 15" more than 1/3 the length of the tile. Always inspect materials prior to installations. Always mix 2-3 cartons at a time while installing to insure the best blend.

Book An
Appointment



www.tileamerica.com

SAND



BROWN

