

# TILE AMERICA

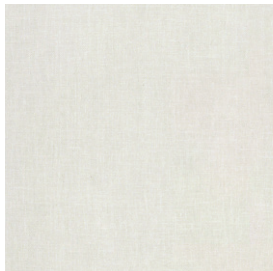
## TOUCH

Porcelain tile classified as Impervious Group P1 is frost-resistant and chemically resistant. These characteristics are achieved through the dry-forming of high-quality mixtures composed of atomized and blended natural raw materials, such as kaolin minerals and feldspars.

### Collection Description

Collection	Touch
Finish	Natural
Glazed/Unglazed	Glazed
Thickness in inch	5/16 in
Thickness in mm	8mm
Rectified	Yes

### Available Colors



Snow Crest



Summer Breeze



Pearl Essence



Sun Glow



Evening Sunset

### Nominal Sizes

#### Field Tile



12"x24"

# TILE AMERICA

## TOUCH

### Product Dimensions (Rectified)

Nominal Size (in)	Actual (in)	Nominal Size (cm)	Actual (mm)
12 x 24 in	11.73 x 23.70 in	30 x 60 cm	298.00 x 602.00 mm

For more information about this collection scan below



### Technical Features

Physical Properties	Norms	Required Standards	Stonepeak Results <sup>(1)</sup>
Water Absorption	ASTM C 373 - 18	Impervious ≤0.5%	≤0.5%
Thickness Variation	ASTM C 499 - 20	± 0.02 inch	± 0.02 inch
Facial Dimension	ASTM C 499 - 20	± 0.25 %	± 0.25 %
Warpage Average Diagonal	ASTM C 485 - 16	± 0.40 %	± 0.40 %
Warpage Average Edge	ASTM C 485 - 16	± 0.40 %	± 0.40 %
Wedging	ASTM C 502 - 16	± 0.25 %	± 0.25 %
Bond Strength	ASTM C 482 - 20	≥ 50 psi	≥ 50 psi
Breaking Strength	ASTM C 648 - 20	≥ 275 lbf	≥ 275 lbf
Hardness (Mohs)	ASTM C 1895 - 20	Range 0 - 10	≥ 7 <sup>(2)</sup>
Frost Resistance	ASTM C 1026 - 13 (2018)	No sample must show alterations to surface	No evidence of damage
Chemical Resistance	ASTM C 650 - 20	Range A / E	Class A <sup>(3)</sup>
Stain Resistance	ASTM C 1378 - 20	Range A / E	Class A <sup>(3)</sup>
Fire Resistance	ASTM E84	Class A	Class A1-A1FL

### Result Notes

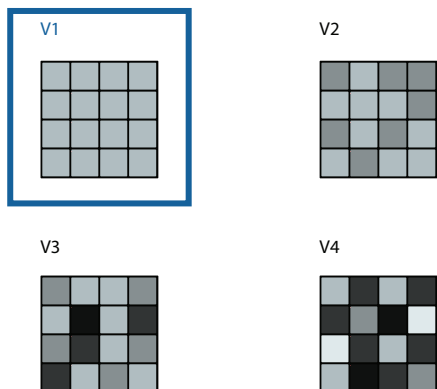
- (1) All values given are for textured/natural/structured finish. Values for different finishes are available upon request.
- (2) Mohs result referring to textured/natural finish. For polished/semi-polished/silky finish: ≥ 6.
- (3) Chemical and stain resistance refer to textured/natural finish. For polished/silky finish tests are provided on request. For more detailed information, refer to ANSI A137.1 Specifications for Ceramic Tile.

# TILE AMERICA

## TOUCH

### Technical Features: Visual Evaluation Shade & Texture

#### Visual Evaluation



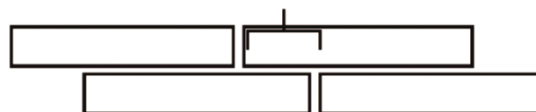
TCNA rates tile color and texture variation on a scale up to V4, with V4 indicating the highest variation.

This porcelain tile is rated V2, meaning moderate variation in tone, primarily consistent with slight differences between tiles.

#### Recommended Grout Joint

Recommended grout joint is 3/16" or greater.

Grout joints of 1/8" inch or less, especially with larger format tiles or running bond patterns, may require floor flatness values in excess of the 1/4" in 10' (or 1/16" in 1.0') standard required by ANSI.



For patterns with running bond/brick joints, Stonepeak recommends a maximum of 33% offset.

### Technical Features: Recommended Use

Visible Abrasion Resistance ratings are based on ASTM C1027-19 testing, which measures surface wear under abrasive load, combined with our manufacturer-declared results.

Class 1	Class 2	Class 3	Class 4
Residential Bathrooms	All Residential Areas	All Residential / Light Commercial	All Residential / Commercial
		Pearl Essence, Sun Glow, Evening Sunset	Snow Crest, Summer Breeze

### Pre-Consumer Recycled Content

This porcelain product, manufactured at the Crossville, TN factory, contains at least 40% pre-consumer recycled content, with all claims certified by Bureau Veritas Certification. Recycled content is a LEED metric intended to increase demand for building materials that incorporate reused or repurposed materials.



# TILE AMERICA

## TOUCH

### Technical Features: DCOF - Wet Test

Norm	Standard
ANSI A 326.3 - 2021	≥ 0.42

### Product Use Recommendation

Finish	Classification	Criteria
Natural, Polished	Interior Dry (ID)	≥ 0.42 dry DCOF
Natural	Interior Wet (IW)	≥ 0.42 wet DCOF

More information can be found at: (<https://tcnatile.com/resource-center/dynamic-coefficient-of-friction/>)

### Result Notes

- (4) DCOF results referring to textured/natural/structured products are performed with the WET test, while for polished, semi-polished and silky the DCOF test is performed DRY.
- (4) The DCOF values shown in the catalog, website, or other sales documents are for reference only and are non-binding. Any specific requirements must be confirmed by us at the time of order and, in any case, always prior to installation.
- (4) All values given are for textured/natural/structured finish.

### Certifications, Memberships and Validations

#### Product Certifications and Validations



#### Organizational Memberships & Other Validations



#### More information



Production Plant  
238 Porcelain Tile Dr.  
Crossville, TN 38555 US

The technical data reported in this Technical Data Sheet are indicative and non binding. The company reserves the right to make changes at any time without prior notice. Always refer to the latest available version of this document.